

# CORINTHIA COLLECTION



SAMUEL & SONS



**SAMUEL & SONS PASSEMENTERIE** announces the launch of the *Corinthia* collection. Inspired by the architectural ornamentations of the Italian Renaissance, the Samuel & Sons Design Studio translated the period's emphasis on symmetry and proportions into a fresh, new collection of exquisitely embroidered linen and wool appliqué borders. The designs and motifs incorporated were influenced by the period's ornate metalwork, architectural plans, classical columns and friezes, statuary, inlay work and tile design.

*Corinthia* features four designs: *Acanthus*, *Greek Fret*, *Ogee*, and *Palladio*. The borders feature a dry linen ground on which meticulously laser-cut wool has been appliquéd. The border edges are bound with a tight satin stitch. The designs are embellished with a variety of intricate embroidery stitches best exemplified in the *Acanthus* border. Samuel and Sons is proud to have developed this innovative construction and to introduce this groundbreaking, unique construction to the world of passementerie.



2.75" and 5" Palladio Embroidered Border in Black



6" Acanthus Border in Canvas



Portion of Italian Renaissance architectural frieze

The *Acanthus Embroidered Border* was inspired by scroll work in the gardens of the Villa d'Este in Lake Como, Italy. *Acanthus* embodies the styling of the Italian Renaissance era with its emphasis on symmetry and proportion, as well as the use of elaborate botanical elements articulated through beautiful organic scroll work. This ornate border is available in a dynamic 6" width in four luxurious colorways.

The *Ogee Embroidered Border* (shown on cover), with its mirror-image, intertwined S-curves, is graceful in its lines and fluidity. *Ogee* is available in both 2.75" and 5" widths in seven sophisticated colorways.

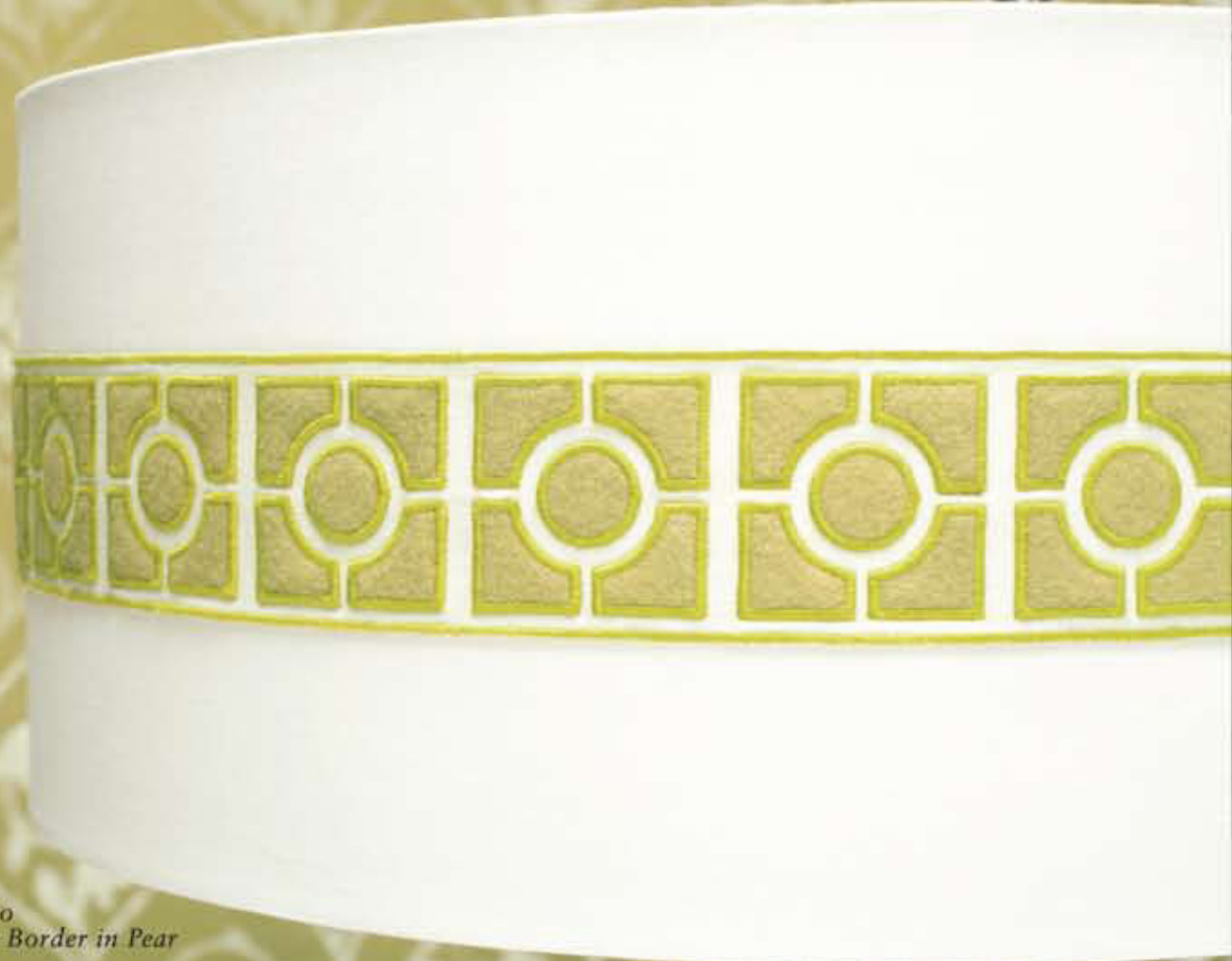
*"The Corinthia collection honors 16<sup>th</sup> century Renaissance designs from antiquity, while reinterpreting them into a contemporary aesthetic with a sophisticated color palette that speaks to the various lifestyles of today."*

- MICHAEL COHEN, PRESIDENT, SAMUEL & SONS



*Coffer detail from San Spirito, Florence*

The *Palladio Embroidered Border* was translated from the geometry of Florence, Italy's San Spirito barrel vault ceiling plan. This building's interior is one of the pre-eminent examples of Renaissance architecture, and *Palladio's* repeat captures one of its basilica's most famous motifs.



*2.75" Palladio Embroidered Border in Pear*



*5" Greek Fret Embroidered Border in Teal*



*2.75" Greek Fret  
Embroidered Border in Porcelain*



*Carved Greek Fret cornice detail circa 15th century*

The *Greek Fret Embroidered Border* comes from the classical Grecian Key design, which stems from the linear form of a labyrinth. The Greek key has always been considered one of the cornerstones of classic antiquity, appearing in many architectural friezes as well as on carved mantels, furniture and walls. Samuel and Sons' interpretation is sleek in its balanced geometry, graphically bold in its statement, and contemporary in its coloration. *Greek Fret* is available in twelve fresh colorways in both 2.75" and 5" widths.

The *Corinthia* collection's color story evokes sophistication and a modern color palette. From the soft neutral cream wool with ivory embroidery on buff linen ground of *Alabaster*, to the crisp contrast of ivory linen with the deep cyan wool and embroidery in color *Teal*, *Corinthia's* sumptuous color palette truly speaks to the various lifestyles of today.



*6" Acanthus Embroidered  
Border in Pearl and Lavender*



Corinthia Collection



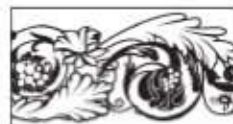
2.75" (7cm) and 5" (12.7) Palladio Embroidered Border is available in Pear and Onyx



2.75" (7cm) and 5" (12.7) Greek Fret Embroidered Border is available in Camel, Alabaster, Porcelain, Dove, Greige, Slate, Lemon, Leaf, Teal, Crimson, Walnut and Tandoori



2.75" (7cm) and 5" (12.7cm) Ogee Embroidered Border is available in Alabaster, Onyx, Ganache, Dusk, Dove, Wedgewood and Navy



6" (15.3cm) Acanthus Embroidered Border is available in Pearl, Canvas, Lavender and Sea Glass

Align your mobile device  
QR Code reader to view  
the Corinthia collection



SAMUEL & SONS

PASSEMENTERIE

212.704.8000 • WWW.SAMUELANDSONS.COM

Shown on cover:  
2.75" and 5" Ogee  
Embroidered Border in Dusk

Shown above:  
Assorted Corinthia  
Embroidered Borders